

CLOUD IP CAMERA

Android App User's Manual

WARNING: YOUR PRIVACY BY CHANGING DEFUALT USERNAME AND PASSWORD AFTER SETUP.

Manual version:

Version	Date	Description
V0	2013.5.31	Initial draft
V1	2013.7.15	Add scheduled recording function, and Application push notification for alarm triggers
V2	2013.11.6	Add the admin password & the guest password function
V3	2014.03.29	Add the installation guide for add device, WPS function and indicator judgment, press "RESET" for factory default

Table of Content

1. Android Device Requirements
2. Network Connection
3. Getting the MIPC APP
4. Log In
 - 4.1 Single device login
 - 4.2 Sign up account login
5. Adding a Cloud camera
 - 5.1 Add Device
 - 5.2 Scan QR Code
 - 5.3 Modify Password
 - 5.4 Setup Wi-Fi
 - 5.5 Removing Camera
6. Camera List Previews
 - 6.1 Preview & Status
 - 6.2 Camera List Manu
 - 6.3 Live View
 - 6.4 Pan ,Tilt & Zoom
 - 6.5 Intercom
 - 6.6 Snapshot & Record Video
 - 6.7 Day & Night , Image Adjustments
7. Cloud Camera Settings
 - 7.1 About
 - 7.2 Nickname
 - 7.3 Admin & Guess Password
 - 7.4 Network
 - 7.5 OSD (On-Screen Display)
 - 7.6 SD Card
 - 7.7 Motion Sensitivity
 - 7.8 Alarm Action
 - 7.9 Alert
 - 7.10 Schedule Recording
 - 7.11 Date/Time
 - 7.12 More settings
8. Messages & Playback

1. Android Device Requirements

MIPC app requires Android OS2.1 or later using a 600 MHz or better CUP.

2. Network Connection

Refer to "Quick Install Guide " to get the camera setup with your Internet.

3. Software setup

Install MIPC from the Play Store (Previously Android Market) .
Search for :MIPC. The app looks like picture as follow.

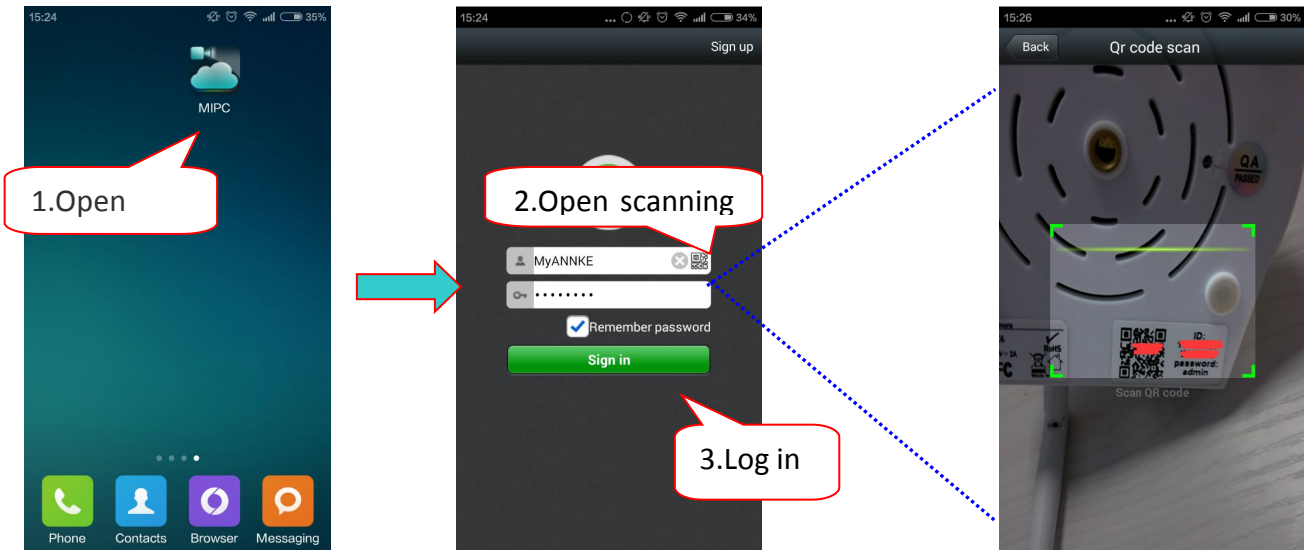


4. Sign Up ,Sign In

To get started using the camera you have two ways :

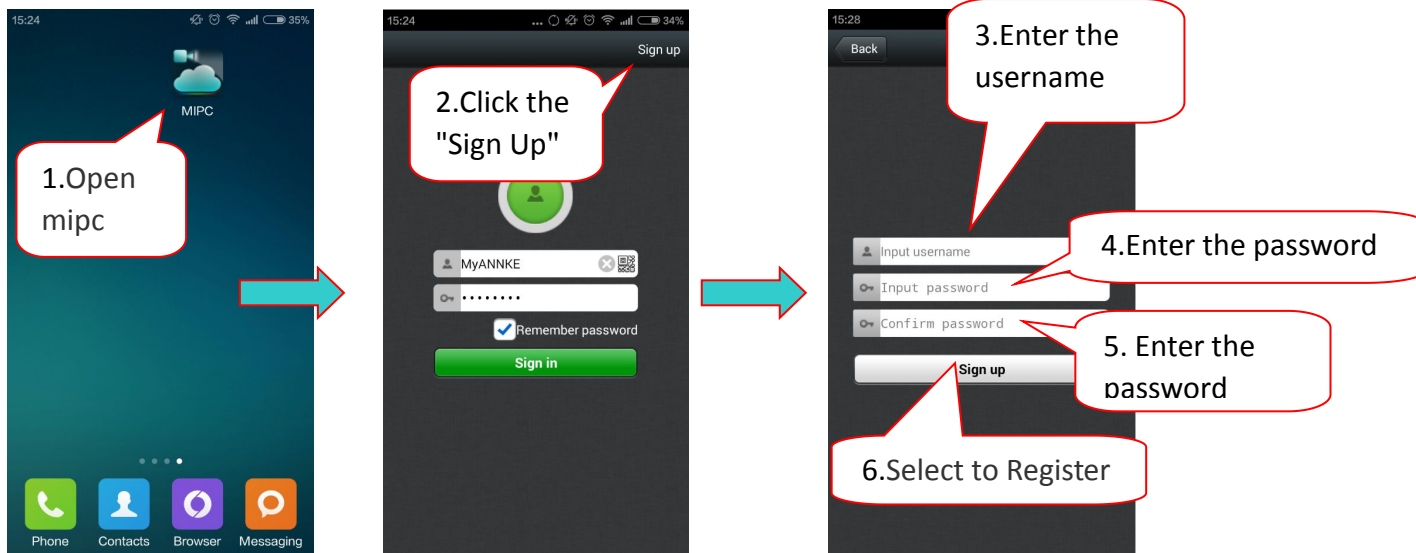
4.1 Single device login

Open MIPC , login interface as follow :



Note: If the QR code is unable scanned and need manually enter the ID number and password. (Each camera is equipped with a unique ID number and default password is **admin**).

4.2 Sign up account login



Note: The account begin with a letter, it may not less than 6 digitals ,The password also not less than 6 digital

5. Adding & Remove a cloud camera

5.1 Add Device

To add a cloud camera ,tap menu icon from top right corner of the app (As pictured below)then select "Add device" from the menu.

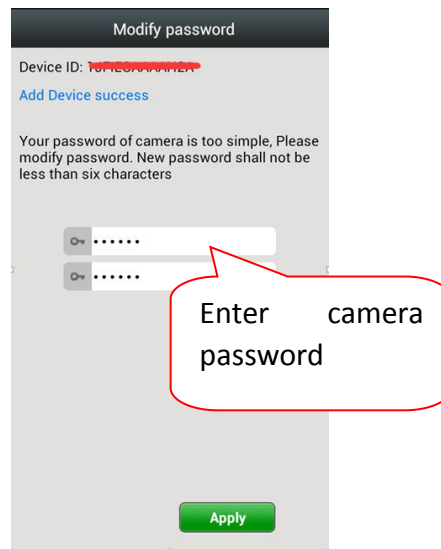
5.2 Scan QR code (or Manually Type in the Device ID)

The next screens prompts for cloud camera identification number. You may enter manually and click next , or use Quick Response (RQ) code scanning tool. To use the QR code scan ,click the icon on the left on the 'Input device ID' Field. A QR code scan window will show.



5.3 Modify Password

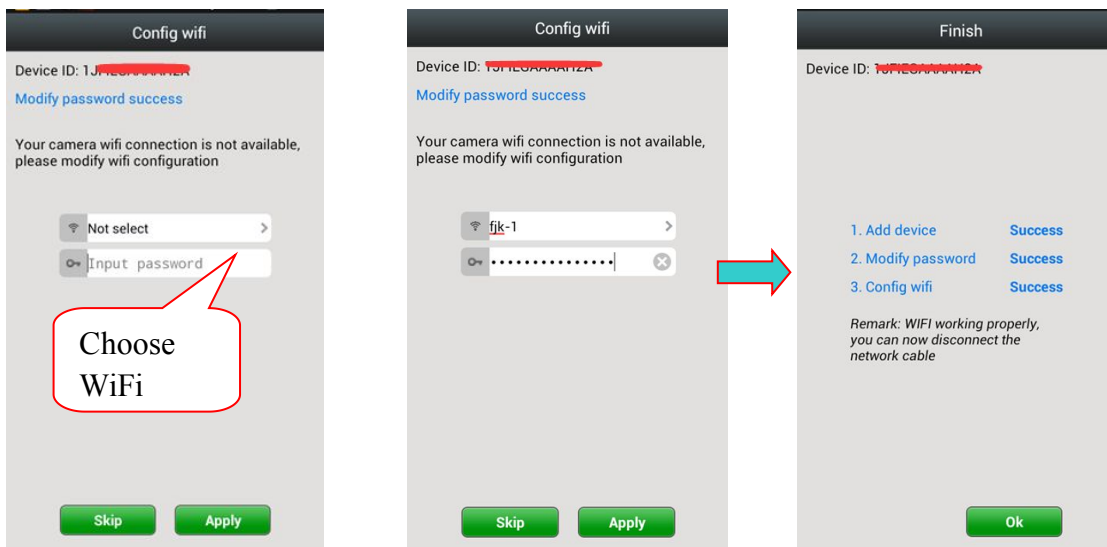
Upon successful QR scan or ID input, you will be prompted to change the default password to protect your privacy.



5.4 Setup Wi-Fi

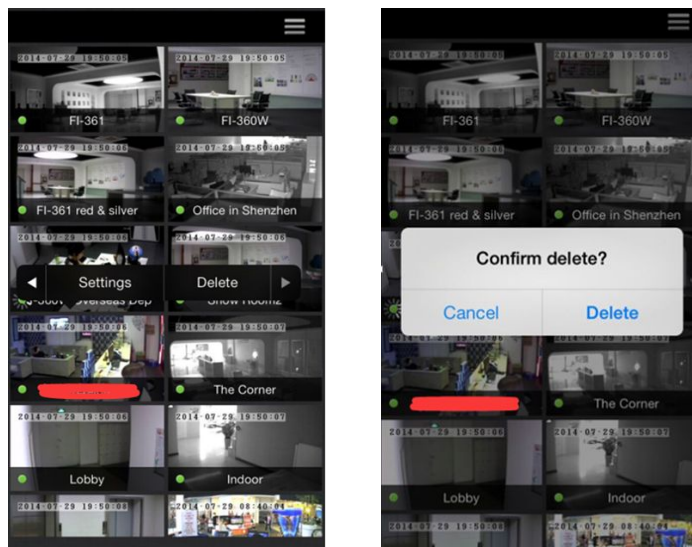
The next step is to set up WiFi. Select your WiFi access point and enter its password. This is the final in setting your camera with the app.

Congratulations.



5.5 Removing Camera

To remove a camera from the Camera List, long press the preview image. A popup menu will display. Select 'Delete' menu to remove that camera from your account.



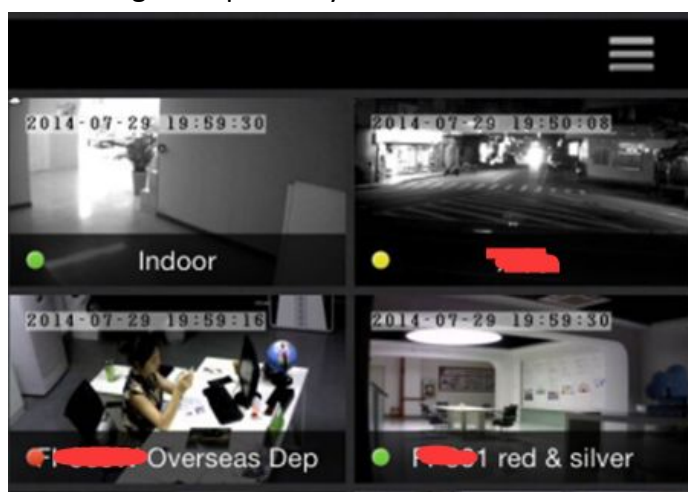
6. Camera List Previews

The camera list panel contains all cloud cameras you have added to your account. Each preview picture has various indicator for online, password changed status, offline or alarm.

6.1 Preview & Status

Each picture in the Camera List has a camera name label. Pull down anywhere on the screen to refresh the preview picture.

The GREEN, RED or YELLOW DOT on the lower left of each preview picture indicates connectivity status as online offline or Password has changed respectively.



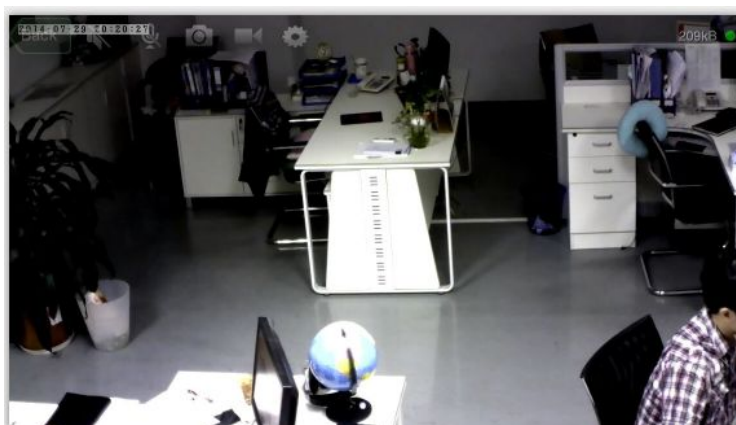
6.2 Camera List Menu

The first option in this menu is the selection of resolution for all cameras. You may choose between four Resolutions :Small[160*90],Half[320*180],Normal[640*360] and HD[1280*720].



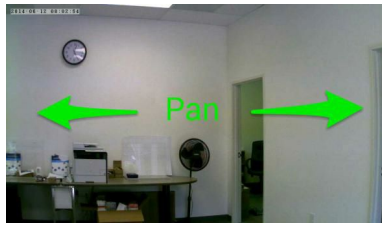
6.3 Live View

To view a camera's live feed, touch a preview picture. Initial display will show a navigation bar with buttons of speaker, microphone, snapshot, record and day&night setting buttons. The navigation bar will disappear after two seconds. Touch anywhere on the live view to activate it again.



6.4 Pan, Tilt, Zoom

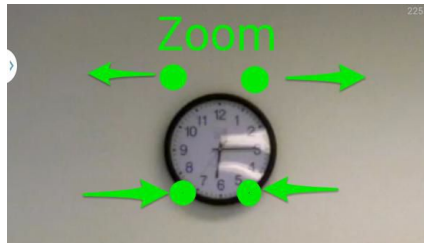
Touch and swipe to the left or right to rotate the camera left or right.



Likewise, touch and swipe up or down to tilt the camera view up or down.

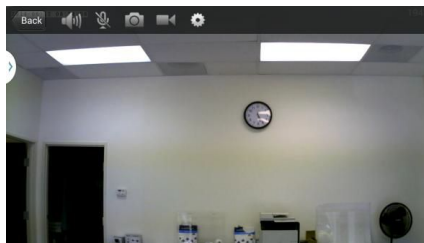


Zoom is accomplished by two fingers touching the screen as if to pinch. Move two touching fingers apart to zoom in; Move two fingers together to zoom out.



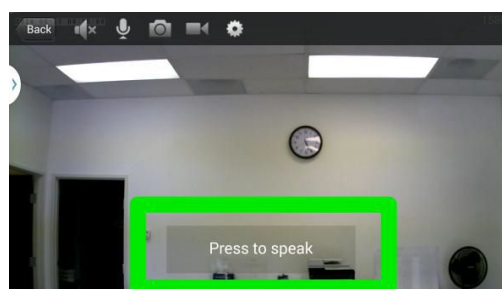
6.5 Intercom

In live view mode, you can listen in by activating the speaker button. By default it is off.



The next button is a microphone button, touch it to activate the intercom feature.

Press and hold 'Press to speak' button to record your message. Release the button to send the message.

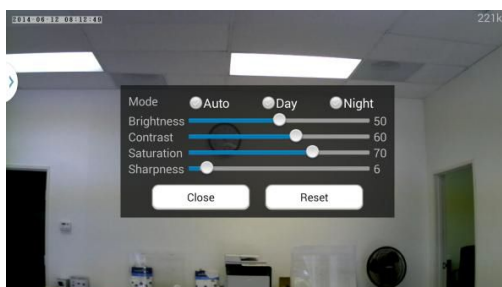


6.6 Snapshot & Record Video

The snapshot button will capture a still picture and display it. Similarly, the record button will record a video until you stop or exit. You may save the picture or video to your device afterward. When you leave the Live View Screen, the video will be stopped and saved automatically to the SD card. It is important to note that when there is no SD card present in the SD Card slot, the record icon will not be available.

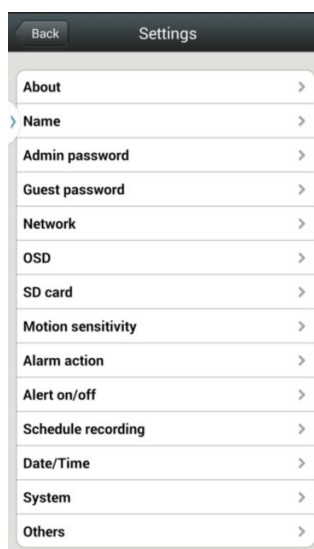
6.7 Day & Night , Image Adjustments

The gears button show available Day & Night settings, and image adjustment functions like Brightness, Contrast, Saturation and Sharpness.



7. Cloud Camera Settings

Each camera has its own settings. Activate it with a long press on the preview image in the Camera List Panel. A popup lists available options. Select 'Settings' from there. Various options are managed from this screen.



7.1 About

This screen has details on model number, software version and camera device ID.

7.2Name

In this screen, you may provide a nickname for your camera. By default , the Device ID will be used in the Camera List.

7.3Admin & Guest Password

Admin Password screen will allow you change the password given that you know the current password. To allow other users access to the camera without the ability to make system wide settings ,it is recommended that you create a guest password .

NOTE:

Admin and Guest password can also be changed from the Camera List menu.

7.4Network



Ethernet and WiFi network options are enabled or disabled from this screen.

WiFi access point can be set here .Network status indicates that the camera is able to connect using the given access point and password . STATE1 indicator the camera will flash green 3 times every 3 seconds when it is connected successfully.

7.5OSD (On-Screen Display)

This screen allow you to timestamp the video from the camera along with display name.

7.6SD Card

When SD card is inserted into the SD card slot ,its status , capacity and usage information can be seen here . You may format, repair or unmount the SD card. When you can not view playback video or view alarm information , you may choose to repair.

Though repairing cause lose of the some data.

7.7 Motion Sensitivity

Motion detection sensitivity level from 0-100 can be adjusted from day and night. Alarm input/Output can also be set.

7.8 Alarm Action

Alarm Action allow you to choose what to do when an alarm has been triggered either by motion detection or by alarm device. Alarm I/O, snapshot and record actions available.

7.9 Alert On/Off

Alert screen is where you set application push notification for alarm triggers.

7.10 Schedule Recording

Schedule Recording may be enabled with the option to record all day and night ,seven days a week.Or you can enable it with four schedules .Each schedule has a start ,end time and which days of the week to record.

7.11 Date/Time

Day and time can be set manually or it can synchronized to a time server.

7.12 System

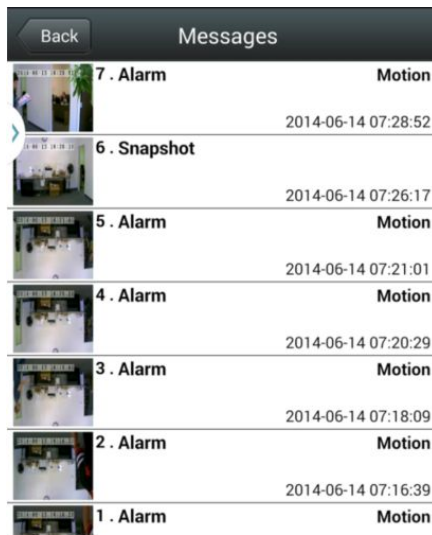
System screen shows availability of new firmware .If it is available, you may choose to update the firmware.

7.13 System

Adjust speaker and microphone volume in this screen for loudness of intercom function.

Also , available in this screen is flip function to flip vertically the live fed image. Additonally , power frequency can be set to be 50 or 60Hz in this screen.

8. Messages & Playback



Message screen lists all motion and alarm events that has occurred .Click on the image on the left to view a snapshot of the event.

Playback screen lists all video recordings .Click to play a video .To refresh the list for incoming videos, pull up from the bottom of the screen.